



## Gulf of Mexico 2012 Expedition Tools for Classroom Explorers

# How to Use Video Imagery from Underwater Robots



Image captions/credits on Page 2.

# lesson plan

### Focus

Video from remotely operated vehicles for ocean exploration

### Grade Level

5-12 (Physical Science/Earth Science); see Learning Procedure,  
Adaptation to Different Grade Levels

### Focus Question

How can images obtained by underwater robots be used to assist ocean exploration aboard the *Okeanos Explorer*?

### Learning Objectives

- Students will describe typical applications and limitations of imagery obtained with remotely operated vehicles (ROVs).
- Students will demonstrate how lasers may be used to calibrate images for size and distance measurements.
- Students will analyze ROV imagery from the *Okeanos Explorer* to make inferences about deep-ocean habitats and organisms.

### Materials

- Copies of the *Guide for Robot Imagery Investigations*, one for each student group
- Copies of *ImageJ Basics*, one for each student group; see Learning Procedure, Step 1c
- Ruler, one for each student group

### Audio-Visual Materials

- (Optional) Interactive white board or video projector

### Teaching Time

One or two 45-minute class period; (more if students complete Supplemental Datasheets)

### Seating Arrangement

Groups of two to four students

### Maximum Number of Students

30

### Key Words

NOAA Ship *Okeanos Explorer*

## Ocean Exploration

## Robot

## Video

## ImageJ

**Background Information**

*Explanations and procedures in this lesson are written at a level appropriate to professional educators. In presenting and discussing this material with students, educators may need to adapt the language and instructional approach to styles that are best suited to specific student groups.*

**Images from Page 1 top to bottom:**

Backdeck: Bobby Mohr, Tom Kok, and Jeff Williams discuss 'the plan' on the back deck. Image courtesy of the NOAA *Okeanos Explorer* Program.

<http://oceanexplorer.noaa.gov/okeanos/explorations/ex1202/logs/hires/mar21-2-hires.jpg>

Anchor resting on the top of the Site 15429 wreck. *Lophelia* coral is also visible.

After a great first marine archaeology dive on March 27, everyone was excited about exploring a second target. Site 15429 was initially located in 2009 with the National Institute for Undersea Science and Technology's (NIUST) *Eagle Ray* autonomous underwater vehicle (AUV). The data showed a potential vessel resting on the seafloor. The remotely operated vehicle (ROV) dive confirmed what several members of the Science Team expected. The wreck appears to be a hotspot for *Lophelia* coral. It was a great day for both the marine archaeologists and the biologists. Image courtesy of NOAA *Okeanos Explorer* Program.

[http://oceanexplorer.noaa.gov/okeanos/explorations/ex1202/logs/hires/mar29\\_hires.jpg](http://oceanexplorer.noaa.gov/okeanos/explorations/ex1202/logs/hires/mar29_hires.jpg)

Image of gridded bathymetry shown as a wireframe and draped over gridded backscatter data. Ever since the Team on Leg I of the Gulf of Mexico expedition mapped the DeSoto Canyon area in early March 2012, there was lots of speculation about one specific seafloor feature in approximately 400 meters of water. Not only did the feature seem to be the one spot of significant relief in an otherwise fairly flat area, but it also showed up in the backscatter data as a very 'hard' target. Image courtesy of NOAA *Okeanos Explorer* Program.

[http://oceanexplorer.noaa.gov/okeanos/explorations/ex1202/logs/hires/mar28\\_update\\_hires.jpg](http://oceanexplorer.noaa.gov/okeanos/explorations/ex1202/logs/hires/mar28_update_hires.jpg)

Through the power of technology, scientists on the ship and on shore are able to view and learn about the complex ecosystems in the Gulf of Mexico. Deep-sea corals flourish in the dark depths of the Gulf of Mexico, providing foundations that attract lush communities of other animals, including brittle stars, anemones, crabs, and fish. This diversity of life on the seafloor may be out of sight, but it is has been squarely on the minds of scientists seeking to determine the short- and long-term ecological impacts of the Deepwater Horizon oil spill. Image courtesy of the NOAA *Okeanos Explorer* Program.

<http://oceanexplorer.noaa.gov/okeanos/explorations/ex1202/logs/hires/mar24-2-hires.jpg>

On August 13, 2008, the NOAA Ship *Okeanos Explorer* was commissioned as "America's Ship for Ocean Exploration;" the only U.S. ship whose sole assignment is to systematically explore our largely unknown ocean for the purposes of discovery and the advancement of knowledge. To fulfill this mission, an exploration strategy is used that involves three major activities:

- Underway reconnaissance;
- Water column exploration; and
- Site characterization.

Underway reconnaissance involves mapping the ocean floor and water column while the ship is underway, and using other sensors to measure chemical and physical properties of seawater. Water column exploration involves making measurements of chemical and physical properties "from top to bottom" while the ship is stopped. In some cases these measurements may be made routinely at pre-selected locations, while in other cases they may be made to decide whether an area with suspected anomalies should be more thoroughly investigated. Site characterization involves more detailed exploration of a specific region, including obtaining high quality imagery, making measurements of chemical and physical seawater properties, and obtaining appropriate samples.

Key technologies involved with this strategy include:

- Multibeam sonar mapping system;
- CTD and other electronic sensors to measure chemical and physical seawater properties; and
- A Remotely Operated Vehicle (ROV) capable of obtaining high-quality imagery and samples in depths as great as 6,000 meters.

A fourth technological capability that is essential to the *Okeanos Explorer* exploration strategy is advanced broadband satellite communication. This capability provides the foundation for telepresence: technologies that allow people to observe and interact with events at a remote location. Telepresence allows live images to be transmitted from the seafloor to scientists ashore, classrooms, newsrooms and living rooms, and opens new educational opportunities

**The *Little Hercules* Remotely Operated Vehicle**

*Little Hercules* was developed by a team of engineers at Dr. Robert Ballard's Institute for Exploration (IFE) at the University of Rhode Island. Its primary purpose is to gather high quality video imagery in support of scientific research and ocean exploration. Major systems include:

- **Power** – 2,800 volts (AC) supplied from the surface; stepped down to 120 VAC by a transformer aboard *Little Herc*; further converted in the electronics pressure housing to 24 VDC (8A maximum load) and 12 VDC (0.6A maximum load)
- **Propulsion** – Four Technadyne 1020 electric thrusters; two oriented horizontally to provide forward, backward, and rotational motion, and two mounted to form a V when viewed from the front (vertran configuration) which provides up, down, and lateral movement
- **Onboard Control** – PC104 computer
- **Imaging** – Main Camera: One Insite Pacific triple CCD high-definition Zeus Plus HDTV camera with zoom and macro; Utility Cameras: Two Insite Pacific single CCD high-resolution miniature color video cameras
- **Lighting** – Two Deep Sea Power and Light 250-watt-equivalent LED matrix lights; Two Deep Sea Power and Light 400-watt HMI arc lamps
- **Navigation** – Ultrashort Baseline acoustic transponder (works in concert with ship-based system that calculates the ROV's underwater position)
- **Sensors** – Paroscientific 8B7000 pressure/depth sensor; Seabird SBE 49 FastCAT CTD; Tritech PA500 altimeter; Tritech Super SeaKing scanning sonar

These components are integrated within an aluminum frame that is supported in water by a flotation package of syntactic foam, which provides slightly positive buoyancy that is trimmed to neutral by the ROV's vertical thrusters. Most electronics are contained in a 10-inch diameter titanium pressure housing. The ROV is rated to a depth of 4,000 meters, and in air weighs 1,200 pounds.

*Little Hercules* is operated in tandem with a camera platform named *Seirios* that is equipped with a HD video camera identical to that on the ROV, as well as six HMI (hydrargyrum medium-arc iodide) arc lamps that provide a total of 2,400 watts of lighting. *Seirios* has no buoyancy module, and is intentionally much heavier than water to provide a buffer between the ROV and surface motion of the ship. *Little Hercules* is attached to *Seirios* by a 30-m cable called the Remotely Operated Vehicle Tether. *Seirios* is attached to the *Okeanos Explorer's* traction winch by a 17 mm Oceanographic Instrumentation and Control Cable which has an armored outer jacket with 3 power conductors and 3 optical fibers for transmitting data and control signals. A traction winch has large diameter grooved drums that are designed to protect cables from excessive friction and bending under heavy load conditions.

Prior to every dive, the ROV crew reviews multibeam sonar maps of the proposed dive area, and develops a track-line that is the initial path that the ROV will follow. During a dive, the ROV pilots may modify the track-line as they receive requests from scientists aboard the ship and in Exploration Command Centers to obtain video images of certain features and organisms that the ROV encounters during its exploration.

that are a major part of *Okeanos Explorer's* mission for the advancement of knowledge. In addition, telepresence makes it possible for shipboard equipment to be controlled by scientists in shore-based Exploration Command Centers (ECCs). In this way, scientific expertise can be brought to the exploration team as soon as discoveries are made, and at a fraction of the cost of traditional oceanographic expeditions.

For expeditions in 2010, 2011, and 2012, the NOAA Ship *Okeanos Explorer* carried *Little Hercules*, an ROV originally developed by a team of engineers at Dr. Robert Ballard's Institute for Exploration (IFE) at the University of Rhode Island for the primary purpose of gathering high quality video imagery. Nicknamed "*Little Herc*," the ROV proved to be well-suited to this purpose on a variety of successful missions for IFE, including providing the first and only images of John Kennedy's PT Boat, *PT-109*.

For *Okeanos Explorer* missions, *Little Herc* is operated in tandem with a camera platform that carries 2,400 watts of lighting provided by HMI (hydrargyrum medium-arc iodide) arc lamps. This lighting illuminates the total darkness of the deep ocean, helps guide *Little Hercules*, and provides lighting for the high-definition video images of the ROV at work. The camera platform is named *Seirios*, after the name of the brightest star in the night sky (also called the Dog Star, sometimes spelled "Sirius"). *Little Herc* is attached to *Seirios* by a 30-m cable called the Remotely Operated Vehicle Tether, while the camera platform is attached to the *Okeanos Explorer's* traction winch by a 17 mm Oceanographic Instrumentation and Control Cable, which has an armored outer jacket with 3 power conductors and 3 optical fibers for transmitting data and control signals.

A variety of sensors are aboard the ROV for navigation and data collection. These include depth and altitude sensors, an Ultra Short Baseline Tracking System, full color imaging sonar, and a Seabird SBE 49 FastCAT CTD. Video equipment includes two Insite Pacific single CCD (charge-coupled device) high-resolution miniature color video cameras, one Insite Pacific triple CCD high-definition Zeus Plus video camera, two Deep Sea Power and Light 250-watt LED matrix lights, and two Deep Sea Power and Light 400-watt HMI arc lamps. For additional details about *Little Herc*, see the sidebar, *The Little Hercules Remotely Operated Vehicle*.

For more information about other ROVs, visit <http://oceanexplorer.noaa.gov/technology/subs/rov/rov.html>.

This lesson introduces students to remotely operated vehicles and video imagery as they are used for ocean exploration aboard the *Okeanos Explorer*. In the future, students will have the opportunity to apply their analytic skills to investigate additional video imagery as the *Okeanos Explorer* continues its voyages of discovery in Earth's deep ocean. The techniques presented in this lesson may be used to complete *Okeanos Explorer* Video Imagery Supplemental Datasets, which are linked from the "Education" layer of the *Okeanos Explorer* Atlas for selected cruises, as well as from the Education section of Web pages provided for these cruises (<http://oceanexplorer.noaa.gov/okeanos/explorations/explorations.html>).

### Learning Procedure

#### Adaptations for Different Grade Levels

The following procedure is adapted from the *Through Robot Eyes* lesson from the *NOAA Ship Okeanos Explorer Education Materials Collection Volume 2: How Do We Explore?* ([http://oceanexplorer.noaa.gov/okeanos/edu/lessonplans/media/hdwe\\_912\\_roboteyes.pdf](http://oceanexplorer.noaa.gov/okeanos/edu/lessonplans/media/hdwe_912_roboteyes.pdf)). The original lesson is targeted to grades 9-12, but portions of the lesson may be useable for grades 5-8 depending upon students' skill levels. The following adaptations are suggested:

- Review resources listed in Step 1a, and consider whether these may be suitable as technical reading assignments for students.
- Complete Step 1b, Step 2, and Step 3 to introduce students to the *Okeanos Explorer* mission, exploration strategy, and ROV operations.
- Consider the whether you want to show students some of the images included with the *What Little Herc Saw* lesson ([http://oceanexplorer.noaa.gov/okeanos/edu/lessonplans/media/hdwe\\_78\\_littleherc.pdf](http://oceanexplorer.noaa.gov/okeanos/edu/lessonplans/media/hdwe_78_littleherc.pdf)), and/or the video clip at [http://oceanexplorer.noaa.gov/okeanos/edu/resources/media/movies/0711\\_site\\_k\\_transit\\_video.html](http://oceanexplorer.noaa.gov/okeanos/edu/resources/media/movies/0711_site_k_transit_video.html).
- **For Grades 5-6** – Consider using the activity provided in the *Invent a Robot!* lesson ([http://oceanexplorer.noaa.gov/okeanos/edu/lessonplans/media/hdwe\\_56\\_inventrobot.pdf](http://oceanexplorer.noaa.gov/okeanos/edu/lessonplans/media/hdwe_56_inventrobot.pdf)) targeted toward grades 5-6 in which students use the process of engineering design to develop potential solutions for an ocean exploration problem.
- **For Grades 7-8** – Consider using the activity provided in the *What Little Herc Saw* lesson ([http://oceanexplorer.noaa.gov/okeanos/edu/lessonplans/media/hdwe\\_78\\_littleherc.pdf](http://oceanexplorer.noaa.gov/okeanos/edu/lessonplans/media/hdwe_78_littleherc.pdf)) targeted toward grades 7-8 in which students analyze video data from the *Okeanos Explorer's* underwater robot.



## 1. To prepare for this lesson,

## a. Review:

- Introductory essays for the INDEX-SATAL 2010 Expedition (<http://oceanexplorer.noaa.gov/oceanos/explorations/10index/welcome.html>); including *Little Hercules ROV* (<http://oceanexplorer.noaa.gov/oceanos/explorations/10index/background/rov/rov.html>);
- Daily log entries for July 7 (<http://oceanexplorer.noaa.gov/oceanos/explorations/10index/logs/july07/july07.html>); July 24 (<http://oceanexplorer.noaa.gov/oceanos/explorations/10index/logs/july24/july24.html>); and August 6 (<http://oceanexplorer.noaa.gov/oceanos/explorations/10index/logs/aug06/aug06.html>).

You may want to assign one or more of these essays as background reading prior to beginning the rest of the lesson.

- b. Review background information (above) about the *Okeanos Explorer* exploration strategy and technologies.
- c. Review procedures on the *Guide for Robot Imagery Investigations*. If students will be using classroom computers, download ImageJ and the *ImageJ Basics* handout from <http://rsbweb.nih.gov/ij/download.html> and <http://rsbweb.nih.gov/ij/docs/pdfs/ImageJ.pdf>, respectively.

Also, download the image files EX2010.07.12\_ROV\_01.jpg and EX2010.07.12\_ROV\_02.jpg from [http://oceanexplorer.noaa.gov/oceanos/edu/resources/media/EX2010.07.12\\_ROV\\_01.jpg](http://oceanexplorer.noaa.gov/oceanos/edu/resources/media/EX2010.07.12_ROV_01.jpg) and [http://oceanexplorer.noaa.gov/oceanos/edu/resources/media/EX2010.07.12\\_ROV\\_02.jpg](http://oceanexplorer.noaa.gov/oceanos/edu/resources/media/EX2010.07.12_ROV_02.jpg), respectively. If students will not be using classroom computers, ensure that they will have access to these files.

- d. Download images referenced in Step 2 and 3. You may also want to download examples of imagery from underwater robots from [http://oceanexplorer.noaa.gov/oceanos/media/slideshow/flash\\_slideshow.html](http://oceanexplorer.noaa.gov/oceanos/media/slideshow/flash_slideshow.html) and [http://oceanexplorer.noaa.gov/oceanos/media/slideshow/video\\_playlist.html](http://oceanexplorer.noaa.gov/oceanos/media/slideshow/video_playlist.html).

2. Briefly introduce the NOAA Ship *Okeanos Explorer*, which is the only U.S. ship whose sole assignment is to systematically explore Earth's largely unknown ocean for the purposes of discovery and the advancement of knowledge. Discuss why this kind of exploration is important (for background information, please see the lesson, *Earth's Ocean is 95% Unexplored: So What?*; [http://oceanexplorer.noaa.gov/oceanos/explorations/10index/background/edu/media/so\\_what.pdf](http://oceanexplorer.noaa.gov/oceanos/explorations/10index/background/edu/media/so_what.pdf)). Review the overall strategy for ocean exploration used aboard *Okeanos Explorer*, and the primary technologies involved with this strategy (see background information above).



The ROV *Little Hercules* descends through deep water to an undersea volcano in the Celebes Sea to search for hydrothermal vents and associated ecosystems. Image courtesy of NOAA *Okeanos Explorer* Program, INDEX-SATAL 2010  
[http://oceanexplorer.noaa.gov/okeanos/explorations/10index/logs/hires/1june29\\_hires.jpg](http://oceanexplorer.noaa.gov/okeanos/explorations/10index/logs/hires/1june29_hires.jpg)

3. Show students images of several ROVs (see <http://oceanexplorer.noaa.gov/technology/subs/rov/rov.html>), and briefly describe their capabilities. Conclude with one or more images of the *Little Hercules* ROV, and explain that the primary purpose of this underwater robot is to gather high quality video images as part of site characterization activities. At this point you may want to show the video clip compilation referenced in Step 1d. Lead a discussion of how ocean explorers might use these images. Students should realize that in many cases these images provide the only indication of living organisms in sites being characterized. In addition, these images can provide data about geological formations and other environmental conditions that cannot be obtained with other data gathering instruments. You may want to contrast the scale of ROV video observations with the scale of multibeam sonar images. At a depth of 4,000 m, the *Okeanos Explorer's* multibeam system can resolve features with a dimension of approximately 50 m. At the same depth, *Little Hercules'* video system can resolve objects and features measuring less than 1 cm. Students should also realize that video imagery also has limitations, including:

- Coverage is limited to a relatively small area;
- Mobile organisms may avoid the moving ROV and/or lights used for video imaging; and
- Many organisms cannot be accurately identified from photographs alone.

Show the image EX2010.07.12\_ROV\_02.jpg, call students' attention to the red dots near the center of the image, and ask for ideas about why these dots are present. Students should realize (possibly with your help) that these dots provide a scale that makes it possible to estimate the size of objects in the image.

4. Tell students that their assignment is to learn about some of the ways scientists use imagery from underwater robots to investigate deep-sea ecosystems. Provide each student group with a copy of the *Guide for Robot Imagery Investigations* and the *ImageJ Basics* handout, as well as any instructions about operating the ImageJ software on classroom computer systems. Point out that the primary purpose of the *Guide* exercises is to become familiar with techniques that can be used for a wide variety of investigations and projects that use digital imagery.

When students have answered all questions on the *Guide*, lead a discussion of their results. The following points should be included:

- The approximate height of the portion of the soft coral visible in Figure 1 is 25.4 cm.
- The span of the two brittle star arms that are closest to horizontal is about 10 cm.

- The approximate length of the shrimp in the lower left of Figure 2 is 9.2 cm.
- The approximate length of the violet sea cucumber in the upper center of Figure 2 is 10.9 cm; the sea cucumber may be somewhat larger than this, since it is farther away than the substrate where the laser dots are located.
- The fish in Figure 4 is 6 meters from the robot, since the beam from the third laser converges with the beam from the parallel laser on the right, giving the appearance of only two dots on the fish.
- The total length of the fish in Figure 4 is approximately 30 cm.
- The fish in Figure 5 is 3 meters from the robot, since the beam from the third laser forms a dot that is 5.0 cm from the dot formed by the parallel laser on the right. The hint in Figure 6 is that that the angle  $q$  is constant, so the tangent of  $q$  is constant and equal to  $d / D$ , and also equal to  $b / B$ .
- The total length of the fish in Figure 5 is approximately 30 cm.
- Errors involved with video fish surveys include avoidance of the robot by some fish species; attraction to the robot by other species, which may also circle the robot and be counted more than once; and the exclusion of cryptic species that hide in crevices that are out of the camera's view. In some cases, particularly when areas are being explored for the first time, it may not be possible to accurately identify every fish seen. This problem may arise when the characteristics used for identification require close inspection (such as the number of rays in a fin). Accurate identification also depends upon the experience of scientists watching the video; but occasionally, no one can identify a strange organism because it is a species new to science and has never been seen before!
- The width ( $W$ ) of a video transect made with a camera whose horizontal angle of view ( $A$ ) is 90 degrees and an effective distance ( $D$ ) of 5 m is:  
$$W = 2 \cdot (\tan (0.5 \cdot A)) \cdot D = 2 \cdot (\tan 45) \cdot 5 = 2 \cdot 1 \cdot 5 = 10 \text{ m}$$
- The length of a transect that begins at 2.523456° North latitude, 125.069212° East longitude, and ends at 2.525255 North latitude, 125.069146 East longitude is 0.2002 km.
- Using values from questions 8 and 9, the area of the transect is  
$$10 \text{ m} \cdot 200.2 \text{ m} = 2002 \text{ m}^2$$

To correct for the space that is outside the camera's field of view, it is necessary to subtract

$$0.5 \cdot (W \cdot D) = 25 \text{ m}^2$$

which is the shaded area shown in Figure 6.

- The distance between the eyes of the crustacean is about 2.15 cm; the length of the longest segment in the first right cheliped is about 7.80 cm.
- The area occupied by the large white sponge in the lower left of the image is about 353 cm<sup>2</sup>.
- The area of the branching coral in the upper right of the image is about 253 cm<sup>2</sup>.

Note that students' results will vary depending upon how precisely they outline objects whose areas are to be estimated.

### The BRIDGE Connection

[www.vims.edu/bridge/](http://www.vims.edu/bridge/) – Scroll over "Ocean Science Topics" in the menu on the left side of the page, then "Habitats" then select "Deep Ocean" for activities and links about deep ocean ecosystems. Scroll over "Research and Data Connections" in the menu on the left side of the page, then select "Virtual Expeditions" for activities and links to online activities about various types of exploration activities.

### The "Me" Connection

Have students write a brief essay about how robotic imagery might be of personal benefit.

### Connections to Other Subjects

English/Language Arts, Mathematics, Physics

### Assessment

Students' answers to worksheet questions and class discussions provide opportunities for assessment.

### Extensions

1. Visit the Okeanos Explorer Atlas ([http://www.ncddc.noaa.gov/website/google\\_maps/OkeanosExplorer/mapsOkeanos.htm](http://www.ncddc.noaa.gov/website/google_maps/OkeanosExplorer/mapsOkeanos.htm)) and Web page (<http://oceanexplorer.noaa.gov/okeanos/welcome.html>) for reports, images, and other products from *Okeanos Explorer* cruises.
2. Visit [http://www.marinetech.org/rov\\_competition/rov\\_video\\_2007.php](http://www.marinetech.org/rov_competition/rov_video_2007.php) for a video from the Marine Technology Society's student ROV competition, and links to other sites about underwater robots.
3. For ideas about building your own underwater robots, see Bohm and Jensen (1998), Bohm (1997), and the Sea Perch Program (see Other Resources).



## Other Relevant Lesson Plans from NOAA's Ocean Exploration Program

### **Earth's Ocean is 95% Unexplored: So What?** (from the INDEX-SATAL 2010 Expedition)

[http://oceanexplorer.noaa.gov/oceanos/explorations/10index/background/edu/media/so\\_what.pdf](http://oceanexplorer.noaa.gov/oceanos/explorations/10index/background/edu/media/so_what.pdf)

Focus: Importance of deep ocean exploration (Grades 5-6; Life Science/Earth Science)

Students describe at least three different deep ocean ecosystems; explain at least three reasons for exploring Earth's deep ocean; and explain at least three ways that deep ocean ecosystems may benefit humans.

### **Where's My 'Bot?**

(from the Bonaire 2008: Exploring Coral Reef Sustainability with New Technologies Expedition)

<http://oceanexplorer.noaa.gov/explorations/08bonaire/background/edu/media/wheresbot.pdf>

Focus: Marine Navigation (Grades 9-12; Earth Science/Mathematics)

Students estimate geographic position based on speed and direction of travel, and integrate these calculations with GPS data to estimate the set and drift of currents.

The following lessons are included in the *NOAA Ship Okeanos Explorer Education Materials Collection Volume 2: How Do We Explore?* <http://oceanexplorer.noaa.gov/oceanos/edu/collection/hdwe.html>.

### **To Explore Strange New Worlds**

[http://oceanexplorer.noaa.gov/oceanos/edu/lessonplans/media/hdwe\\_78\\_toexplore.pdf](http://oceanexplorer.noaa.gov/oceanos/edu/lessonplans/media/hdwe_78_toexplore.pdf)

Focus: Strategies for exploring unknown areas on Earth (Grades 5-6; Life Science/Physical Science/Earth Science)

Students describe requirements for explorations of unknown areas on Earth; discuss factors that influenced exploration strategies of the Lewis and Clark and *Challenger* Expeditions; describe the overall exploration strategy used aboard the NOAA Ship *Okeanos Explorer*; and describe how fractal geometry models natural systems, and how scale influences exploration strategy and results.

**Invent a Robot!**

[http://oceanexplorer.noaa.gov/oceanos/edu/lessonplans/media/hdwe\\_56\\_inventrobot.pdf](http://oceanexplorer.noaa.gov/oceanos/edu/lessonplans/media/hdwe_56_inventrobot.pdf)

Focus: Engineering Design (Grades 5-6; Physical Science)

Students discuss advantages and disadvantages of using underwater robots in scientific explorations, and how underwater robots are used aboard the *Okeanos Explorer*; use the process of engineering design to develop potential solutions for an ocean exploration problem; and explain the principle of hydraulic power transfer systems, and construct a robotic arm that demonstrates this principle.

**What Little Herc Saw**

[http://oceanexplorer.noaa.gov/oceanos/edu/lessonplans/media/hdwe\\_78\\_littleherc.pdf](http://oceanexplorer.noaa.gov/oceanos/edu/lessonplans/media/hdwe_78_littleherc.pdf)

Focus: Use of Robotics for Ocean Exploration (Grades 7-8; Life Science/Earth Science)

Students discuss the importance of robotic vehicle technology to the ocean exploration strategy used aboard the *Okeanos Explorer*; discuss how information from underwater robots about biological and geological features is relevant to the concept of biodiversity; and demonstrate a process for analyzing video data from the *Okeanos Explorer's* underwater robot.

**Other Resources**

*The Web links below are provided for informational purposes only. Links outside of Ocean Explorer have been checked at the time of this page's publication, but the linking sites may become outdated or non-operational over time.*

<http://oceanexplorer.noaa.gov/oceanos/edu/welcome.html> – Web page for the *Okeanos Explorer* Education Materials Collection

Anonymous. Sea Perch Program [Internet]. Massachusetts Institute of Technology Sea Grant Program. [cited January 12, 2011]. Available from <http://seaperch.mit.edu/> – Includes detailed instructions for building a simple remotely operated underwater vehicle; based on designs from "Build Your Own Under Water Robot and Other Wet Projects" by Harry Bohm and Vickie Jensen

Bohm, H. and V. Jensen. 1998. Build Your Own Programmable Lego Submersible: Project: Sea Angel AUV (Autonomous Underwater Vehicle). Westcoast Words. 39 pages.

Bohm, H. 1997. Build Your Own Underwater Robot and Other Wet Projects. Westcoast Words. 148 pages.

Moore, S. W., H. Bohm, V. Jensen. 2010. Underwater Robotics. Marine Advanced Technology Education (MATE) Center. Monterey, CA. 769 pp.

## **Correlations to A Framework for K-12 Science Education: Practices, Crosscutting Concepts, and Core Ideas**

### **Framework for K-12 Science Education**

#### **Dimension 1. Scientific and Engineering Practices**

1. Asking questions (for science) and defining problems (for engineering)
2. Developing and using models
4. Analyzing and interpreting data
5. Using mathematics and computational thinking
6. Constructing explanations (for science) and designing solutions (for engineering)
7. Engaging in argument from evidence
8. Obtaining, evaluating, and communicating information

#### **Dimension 2. Crosscutting Concepts**

1. Patterns
2. Cause and effect: Mechanism and explanation
3. Scale, proportion, and quantity
4. Systems and system models

#### **Dimension 3. Disciplinary Core Ideas**

##### **Physical Sciences**

Core Idea PS4: Waves and Their Applications in Technologies for Information Transfer

PS4.C: Information Technologies and Instrumentation.

##### **Life Sciences**

Core Idea LS2: Ecosystems: Interactions, Energy, and Dynamics

LS2.A: Interdependent Relationships in Ecosystems

##### **Earth and Space Sciences**

Core Idea ESS2: Earth's Systems

ESS2.A: Earth Materials and Systems

##### **Engineering, Technology, and the Applications of Science**

Core Idea ETS2: Links Among Engineering, Technology, Science, and Society

ETS2.A: Interdependence of Science, Engineering, and Technology

### **Correlations to Common Core State Standards for Mathematics**

Grade 5 - 8: Measurement & Data

High School: Algebra; Functions

### **Correlations to Common Core State Standards for English Language Arts**

Grades 6-12 Reading: Informational Text

RI.9-10.4. Determine the meaning of words and phrases as they are used in a text, including figurative, connotative, and technical meanings.

Grades 6-12 Literacy in History/Social Studies, Science, & Technical Subjects: Follow precisely a multistep procedure when carrying out experiments, taking measurements, or performing technical tasks.

## Ocean Literacy Essential Principles and Fundamental Concepts

### Essential Principle 1.

The Earth has one big ocean with many features.

*Fundamental Concept b.* An ocean basin's size, shape and features (such as islands, trenches, mid-ocean ridges, rift valleys) vary due to the movement of Earth's lithospheric plates. Earth's highest peaks, deepest valleys and flattest vast plains are all in the ocean.

### Essential Principle 5.

The ocean supports a great diversity of life and ecosystems.

*Fundamental Concept e.* The ocean is three-dimensional, offering vast living space and diverse habitats from the surface through the water column to the seafloor. Most of the living space on Earth is in the ocean.

*Fundamental Concept g.* There are deep ocean ecosystems that are independent of energy from sunlight and photosynthetic organisms. Hydrothermal vents, submarine hot springs, and methane cold seeps rely only on chemical energy and chemosynthetic organisms to support life.

### Essential Principle 6.

The ocean and humans are inextricably interconnected.

*Fundamental Concept b.* From the ocean we get foods, medicines, and mineral and energy resources. In addition, it provides jobs, supports our nation's economy, serves as a highway for transportation of goods and people, and plays a role in national security.

*Fundamental Concept g.* Everyone is responsible for caring for the ocean. The ocean sustains life on Earth and humans must live in ways that sustain the ocean. Individual and collective actions are needed to effectively manage ocean resources for all.

### Essential Principle 7.

The ocean is largely unexplored.

*Fundamental Concept a.* The ocean is the last and largest unexplored place on Earth—less than 5% of it has been explored. This is the great frontier for the next generation's explorers and researchers, where they will find great opportunities for inquiry and investigation.

*Fundamental Concept b.* Understanding the ocean is more than a matter of curiosity. Exploration, inquiry and study are required to better understand ocean systems and processes.

*Fundamental Concept c.* Over the last 40 years, use of ocean resources has increased significantly, therefore the future sustainability of ocean resources depends on our understanding of those resources and their potential and limitations.

*Fundamental Concept d.* New technologies, sensors and tools are expanding our ability to explore the ocean. Ocean scientists are relying more and more on satellites, drifters, buoys, subsea observatories and unmanned submersibles.

*Fundamental Concept f.* Ocean exploration is truly interdisciplinary. It requires close collaboration among biologists, chemists, climatologists, computer programmers, engineers, geologists, meteorologists, and physicists, and new ways of thinking.

### Send Us Your Feedback

In addition to consultation with expedition scientists, the development of lesson plans and other education products is guided by comments and suggestions from educators and others who use these materials. Please send questions and comments about these materials to: [oceanexeducation@noaa.gov](mailto:oceanexeducation@noaa.gov).

### For More Information

Paula Keener, Director, Education Programs  
NOAA Office of Ocean Exploration and Research  
Hollings Marine Laboratory  
331 Fort Johnson Road, Charleston SC 29412  
843.762.8818  
843.762.8737 (fax)  
[paula.keener-chavis@noaa.gov](mailto:paula.keener-chavis@noaa.gov)

### Acknowledgements

This lesson was developed and written for NOAA's Office of Ocean Exploration and Research (OER) by Dr. Mel Goodwin, Science and Technology Consultant to OER's Education Team.  
Design/layout: Coastal Images Graphic Design, Mt. Pleasant, SC.

### Credit

If reproducing this lesson, please cite NOAA as the source, and provide the following URL: <http://oceanexplorer.noaa.gov>



## Guide for Robot Imagery Investigations

Underwater robots are our eyes into Earth's deep ocean. As digital imaging technology continues to improve, views through these robot eyes are beautiful and fascinating (see, for example, [http://oceanexplorer.noaa.gov/oceanos/media/slideshow/flash\\_slideshow.html](http://oceanexplorer.noaa.gov/oceanos/media/slideshow/flash_slideshow.html) and [http://oceanexplorer.noaa.gov/oceanos/media/slideshow/video\\_playlist.html](http://oceanexplorer.noaa.gov/oceanos/media/slideshow/video_playlist.html)). Site characterization is a key element of the *Okeanos Explorer* strategy for making discoveries, and this characterization depends heavily upon the ability of underwater robots to obtain images that can be used to identify living organisms and geological features. The following activities are designed to acquaint you with some techniques for analyzing images obtained with underwater robots. Once you are familiar with these techniques, you will be able to use them for a wide variety of investigations about ocean organisms and ecosystems.

Many underwater robots carry digital cameras that can look ahead of the robot as well as directly below it. Often, the forward-looking camera records video while the downward-looking camera may record still or video imagery depending upon specific mission needs. For some surveys, a series of overlapping still images is obtained from the downward-looking camera. These images are spliced together to produce a mosaic image that can provide complete coverage of a large area. The essay by Liz Podowski (<http://oceanexplorer.noaa.gov/explorations/09lophelia/logs/aug30/aug30.html>) provides more details about this technique.

One problem with most images from underwater robots is that they are two-dimensional, so it can be very difficult to accurately judge the size of organisms and ecosystem features. To overcome this problem, underwater photography systems use a system of lasers. Downward-looking cameras typically have two lasers whose beams

Figure 1.

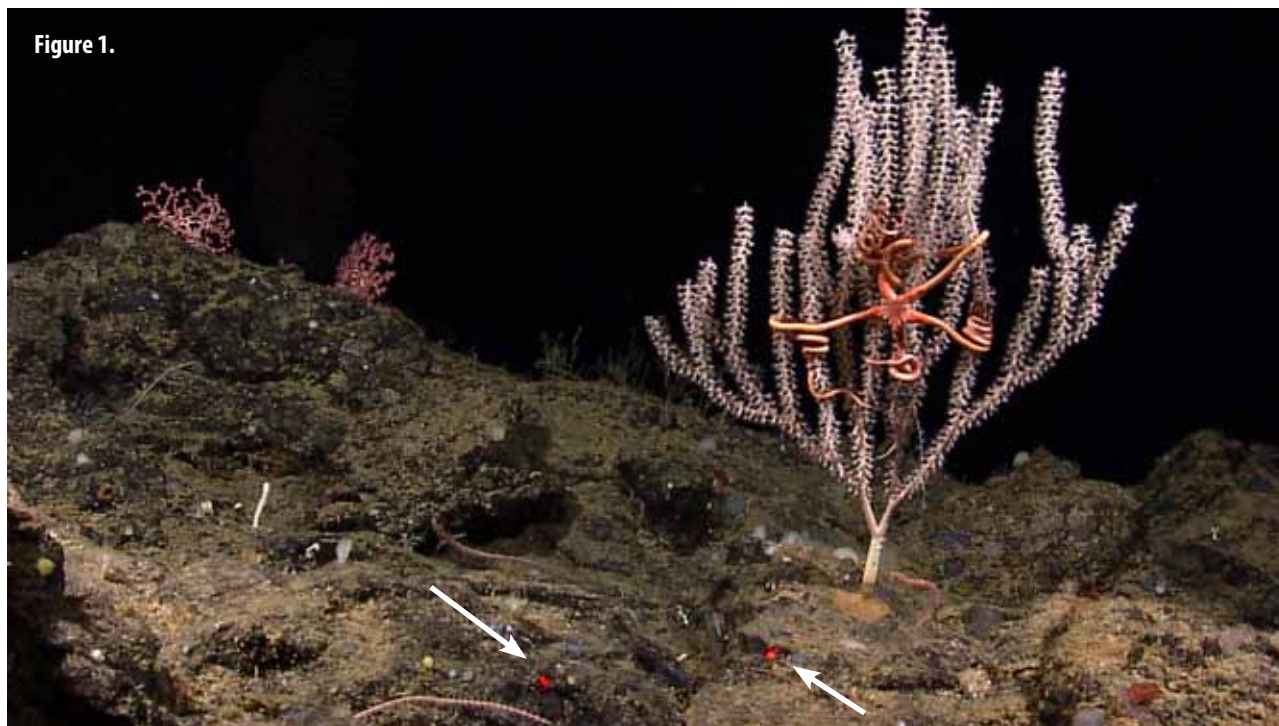


Figure 2.



are parallel and a known distance apart. This places two bright dots on each image that establish the scale of the image. In Figures 1 and 2, the dots on the image are 10 cm apart. Using this information, estimate:

1. The approximate height of the portion of the large branching soft coral that is visible in Figure 1:  

---
2. The span of the two brittle star arms that are closest to horizontal, not including the portions that are twisted around the coral in Figure 1:  

---
3. The approximate length of the shrimp in the lower left of Figure 2:  

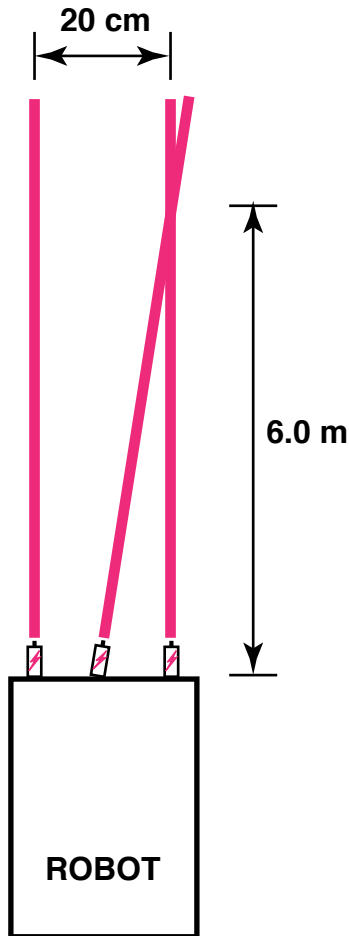
---
4. The approximate length of the violet sea cucumber in the upper center of Figure 2:  

---

*Note: the sea cucumber may be somewhat larger than this, since it is farther away than the substrate where the laser dots are located.*

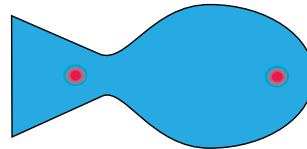
A similar system can be used in forward-looking video, but it is often important to be able to estimate distance as well. To provide this capability, a third laser is added to the system, in between the two parallel lasers. This additional laser is angled so that it converges with one of the parallel laser beams at a known distance in front of the robot (see Figure 3).

Figure 3.



Suppose a video system using the lasers diagrammed in Figure 3 shows the image in Figure 4:

Figure 4.



5. How far away is the fish?

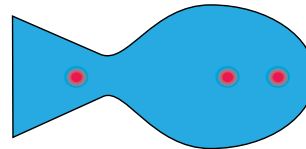
\_\_\_\_\_

6. What is the total length of the fish?

\_\_\_\_\_

Now suppose the same video system shows the image in Figure 5:

Figure 5.



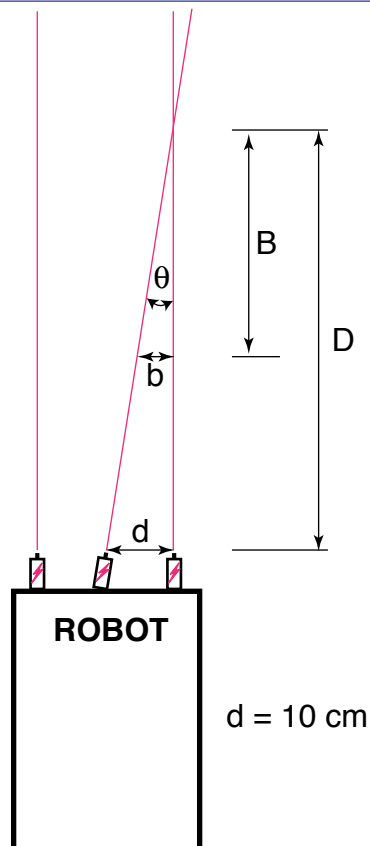
7. How far away is the fish?

\_\_\_\_\_

8. What is the total length of the fish?

\_\_\_\_\_

HINT: Figure 6.



Fishes are a conspicuous part of many marine ecosystems, and ocean explorers often have questions about what kinds of fish inhabit certain areas, and how many fishes are there. Koenig (2001) describes a way to obtain this information that involves navigating an underwater robot along a series of transects (a transect is a path along which data are collected) while recording video from a forward-looking camera. When the transects are completed, the video recording is reviewed and imaged fishes are identified and counted. The total counts for each species are divided by the total area of the transect to obtain an estimate of the density of each species. For example, if 50 fish belonging to a single species were counted in a video transect that covered 100 square meters, the density of that species would be 50 fish / 100 square meters = 0.5 fish/square meter.

9. What might be some errors involved with surveying fishes in this way?

To find the area of a transect, we need to know the width (W) and length (L) of the transect (Figure 7). The width of the transect can be calculated from:

- The effective distance for identifying fish species (D); and
- The video camera's horizontal angle of view (A)

The effective distance for identifying fish species (D) is the limit at which the fish can be identified with a high degree of certainty. Koenig (2001) used a distance of 5 m. The horizontal angle of view (A) depends on the camera used and the position of the zoom.

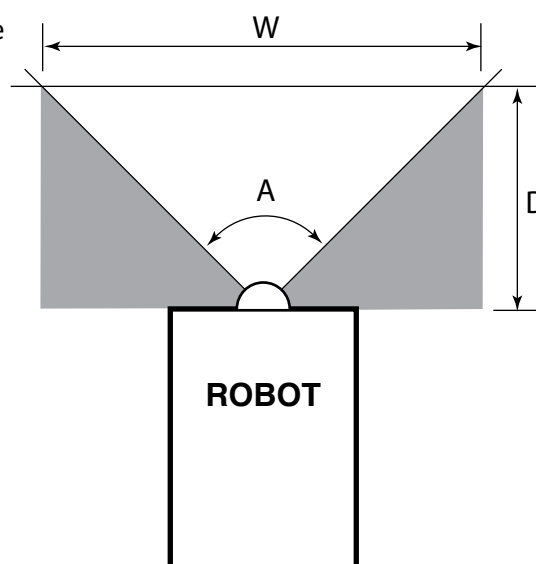
10. Suppose we have a camera whose horizontal angle of view is 90 degrees. Using 5 m as the effective distance, what is the width (W) of a video transect?

The length of a transect (L) can be calculated from the geographic coordinates of the robot at the beginning and end points of the transect. The distance between two points whose latitude and longitude are known can be calculated using the spherical law of cosines formula:

$$d = \text{acos}(\sin(\text{lat1}) \cdot \sin(\text{lat2}) + \cos(\text{lat1}) \cdot \cos(\text{lat2}) \cdot \cos(\text{long2} - \text{long1})) \cdot R$$

where lat1, long1, lat2, and long2 are the latitude and longitude of points 1 and 2, respectively in radians, d is the distance between the points in km, and R is Earth's mean radius (6,371 km); latitude and longitude measurements in degrees may be converted to radians by dividing by 180.

Figure 7.



11. If our transect began at 2.523456° North latitude, 125.069212° East longitude, and ended at 2.525255 North latitude, 125.069146° East longitude, what was the length (L) of the transect (Hint: 1. Be sure to use a calculator or spreadsheet program accurate to at least six decimal places.)
- 

12. Now that you know the width (W) and length (L) of the transect, how much area did the transect include? (Hint: be sure to allow for the space that is outside the camera's horizontal field of view.)
- 

Basic analyses of video and single-frame images can be done by identifying and counting individual organisms, and by using laser scale dots to estimate the area covered by the image. Much more sophisticated analyses can be done using image analysis software. ImageJ is a very powerful image analysis program developed by the National Institutes of Health, and is free to the public. Links for downloading, tutorials, and full documentation are available at: <http://rsbweb.nih.gov/ij/index.html>.

Launch the ImageJ program, and open the file provided by your teacher. Review the *ImageJ Basics* handout, then try the following:

- Draw a line between the two laser dots, and set the measurement scale as described in the handout (remember the dots are 10 cm apart).

13. A decapod crustacean is clearly visible near the bottom center of the image. Measure the distance between the eyes, and the length of the longest segment in the first right cheliped (the leg with a claw near the front of the crab), and record your results. (Hint: Use the magnifying glass to enlarge the image for greater accuracy.)
- 

14. What is the approximate area occupied by the large white sponge in the lower left of the image?
- 

15. Notice the branching coral in the upper right of the image. What is the approximate area of this coral? (Outline the entire coral shape, not the individual branches.)
-